

KITCHENS BEDROOMS & BATHROOMS

BRITAIN'S
BEST-SELLING
KITCHEN,
BEDROOM AND
BATHROOM
MAGAZINE

OCTOBER 20
£4.

Inside

- + Worktops: How to choose the right one for your kitchen
- + Planning an ensuite: Answers to your most-asked questions
- + Super clever ideas for small bedrooms

WORK-LIFE
BALANCE
Create an office that
can be hidden away
when you clock off

READY SET, COOK!

Keep up your new-found culinary skills with
kitchen made for hosting, baking and creating

TAYLISTmedia



thesethreerooms.com



SOLUTION one

“Positioning an island in a space with a protruding wall is a challenge. With this in mind, I decided to make the unit into an L-shape. This allows Gina to cook in a central space without having her back to the steel-framed doors. Positioning a Bora hob with integrated extractor on the island means it can also be opposite the sink, making the preparation and cooking process more efficient.

“A curved breakfast bar at the end of the island helps to soften the space and creates an area for up to four stools, while the Vancouver Sensa quartzite worktop is an eye-catching feature, too. A wine cabinet and table linen drawer have been placed on the end of the island for easy access.

“Opposite the island, in the dining area, a tall pantry cupboard can house small appliances. It’s flanked by twin steel-framed glass display cabinets with integrated LED lighting, which can act as ambient lighting when entertaining.

“I felt a brick terracotta colour would suit this handleless kitchen, so the sink run, tall units and pantry doors are in a made-to-order matt lacquer by Benjamin Moore. It pairs well with a medium dark grey to contrast. Then, the island doors and work surfaces are in a fingerprint-resistant supermatt finish. I actually placed brass handles on the tall units but kept the island handleless to introduce the sleek design Gina wanted.

“The laundry area has been isolated, with sliding doors to allow internal access without encroaching on the breakfast bar area. In there, tall cupboards house the vacuum and ironing board and have plenty of space for detergents, brooms, and more along with the pre-existing laundry chute.

“Along the adjacent wall, I placed a full-height fridge and undercounter freezer. There are also two Siemens ovens that have a steam function and combi microwave. As this area is just steps away from the island, it forms a neat working triangle.”



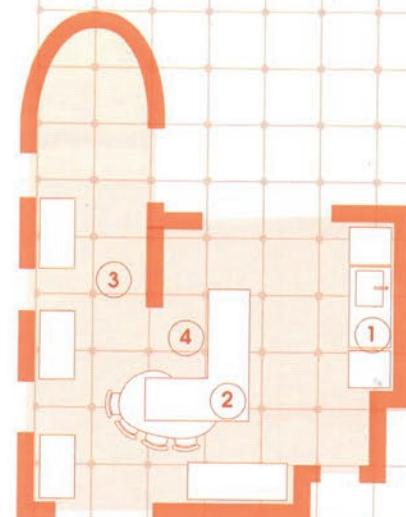
THE DESIGNER

Marzia Caldirola graduated as an interior architect from the Polytechnic University in Milan. She’s been designing kitchens for more than 25 years in the UK and Italy and now works on a freelance basis for Sheraton Interiors.



The PLANS

1 Sink area A single-bowl Silgranite sink by Blanco and multi-functional tap sit to the right of a fully integrated dishwasher. **2 Workstation** A built-in bin in the island allows the space around the hob to function as a handy preparation area. **3 Clear path** Reduced-depth base units form one side of the island, so there's ample walkway between the kitchen and the dividing wall. **4 Deep drawer** An extra pan pull-out has been located on the opposite side of the island, making it ideal for less frequently used cookware.



1 Optimised storage

Sliding doors above the sink allow the cabinets to be used for open display for cookbooks and a few objects.

2 Flooring Wide wooden boards running side to side add a feeling of space to the narrow kitchen. **3 Feature wall**

To prevent the division between spaces from feeling intrusive, it's been clad in thin batons of timber. **4 Utility** Sliding doors allow access to the separate laundry room without encroaching on precious floor area.



NEED TO KNOW

SOURCEBOOK

Design Sheraton Interiors 020 8894 5650
sheratoninteriors.co.uk

Furniture and surfaces Ballerina
ballerina-kitchens.eu

Worktops Sensa cosentino.com

Appliances Hob, Bora 0800 7890 0987
bora.com; Ovens, Siemens 0344 892 8999,
siemens-home.bsh-group.com; Bosch 0344
892 8979, bosch-home.co.uk

Sink Blanco 01923 635200 blanco.com

Tap Quooker 020 7923 3355 quooker.co.uk

THE COSTS

Furniture	£25,008.17
Worktops	£6160.32
Appliances, sink and tap	£8918.76
Total	£40,087.25

THE VERDICT

Gina says: "This design is sleek, smart and spacious. I especially like the feature wall with the ribbed wood – it makes the room feel luxurious. I also like that Marzia gave us lots of display area in the glass cases, plus they echo the steel-framed doors, which is a thoughtful touch. Andy liked the shaped counter on top of the island in a different material but I'm not sure about it. I'd also prefer and 1.5-bowl sink rather than a single bowl."

"I like how the laundry appliances have been grouped with the chute, and that there's a home for the vacuum cleaner and ironing board. It's like a mini utility. I love the brick red colour, and have actually have had a swatch of Benjamin Moore's Parisian Red for months. I'm less keen on the grey, as we have it elsewhere." >