

# kbbreview



3-6 March 2024  
NEC Birmingham

## KBB BIRMINGHAM SHOW PREVIEW

Our bumper, 50-page guide to the UK's biggest KBB exhibition



ANOTHER FIRST CLASS  
DELIVERY FROM  
**THE UK'S FINEST**





Dekton worktops blend in with the dark theme but introduce striking veins of gold

# Dark,

# modern and minimalist

Sheraton Interiors reveals how it transformed the cooking experience for a London couple who hankered for a modern, open-plan living space

**O**ur clients wanted to expand their ground floor in to the existing extension, transforming what were previously separate spaces – a kitchen, a utility room, a lounge, and dining area – creating a generous eight-metre room. This newly designed open-plan space would neatly blend together a kitchen, as well as a dining and lounge area.

They wanted a minimalist, dark kitchen so we opted for Graphite Black in an ultra-matt finish. In keeping with the modern theme, they liked the Dekton Laurent worktops, which are matt like the units. The stone has a striking, dramatic dark brown

dishwasher to the right and integrated bin unit to the left. The black glass tambour unit enables them to use the corner space without having to have a door swing open, and also looks great from an aesthetic point of view.

The tall larder units house a combi microwave oven with warming drawer and a single oven and ample storage space with pull-out drawers. LED lighting is integrated in the wall cabinetry to allow for accent lighting.

While initially considering oak-effect folding-door wall units above the sink to add texture and depth to the space, the client eventually leaned towards a more unified design. They chose a tinted glass

But they didn't want to forfeit gas, so for this we added a Fisher & Paykel hob as it can be flush-fitted. The island also houses four pan drawers and reduced-depth based units allowing for maximum storage in the kitchen.

There was a space at the end of the tall run that we felt would work nicely as a bar area with integrated wine fridge. We decided to build up the stone to give a clean and more luxurious look.

One of the unique challenges of this project was the client's preference to hide the utility room's entrance from the dining area. And so the design cleverly incorporates a feature wall that not only added an element of interest, but also discreetly hid



The bronze tinted glass splashback was chosen to help reflect the natural light in the room



## About Sheraton Interiors



Sheraton Interiors is a family-owned business established by Shehryar and Nadia Khan in 2016. They have more than 20 years' experience designing and installing bespoke kitchens. Sheraton Interiors works with their clients all the way from design brief through to project completion. The featured kitchen was designed by the retailer's senior designer Mark Hassett (pictured).

### THE PROPERTY

A four-bedroom semi-detached property in Whitton, near Hounslow in west London.

### THE CLIENTS

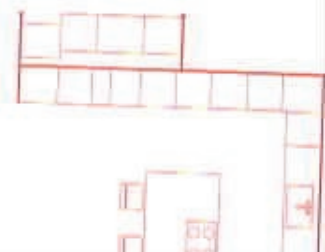
The clients, parents to two children and owners of a small dog, purchased the home in 2007. In 2023, they finally managed to add an extension and at the same time their dream kitchen.

### THE BRIEF

When the property was bought, the downstairs area had a restricted layout. The design comprised a dining room, a kitchen, and a modest utility space, all crammed uncomfortably together. It was clear that the set up wasn't favourable to modern, open-plan living. Realising this limitation, the owners wanted to transform the downstairs into a more expansive and open-plan space. Their ultimate goal was to have a layout that not only met their needs, but also provided the seamless transition of an open-plan design, making it feel more modern and up-to-date. ▶



A feature wall in the dining area hides the utility room entrance





## KITCHEN DETAILS

Overall project cost:  
**£49,971**

**Designer:** Mark Hassett, senior designer.  
**Type of kitchen:** Modern German kitchen  
**Cabinetry/doors:** Graphite black in ultra-matt finish from Nobilia  
**Worktops:** 20mm Dekton Laurent  
**Splashback:** Bronze mirror glass  
**Sinks:** Ceria Granite undermount sink in kitchen

INSTALLER COMMENTS