

FREE PROJECT CHECKLIST INSIDE | BATHROOM TAPS | FREESTANDING KITCHENS | THE LATEST DESIGNS AND TRENDS

KITCHENS BEDROOMS & BATHROOMS

BRITAIN'S
BEST-SELLING
KITCHEN,
BEDROOM AND
BATHROOM
MAGAZINE

JUNE 2023
£5.99

BIGGER, BETTER *spaces*

CLEVER KITCHEN EXTENSIONS,
BEAUTIFUL WETROOMS
& GRAND MASTER SUITES

PLUS
**XL kitchen
appliances**
- perfect for
entertaining

**AMAZING
REAL
HOMES**

Cover story

"I wanted an island
big enough to
dance on"

TAYLISTmedia



thesethreerooms.com

DRAWING BOARD

Design consultant at Et Lorem, Jade Eaton and owner of Sheraton Interiors, Shehryar Khan, design a clutter-free, open-plan kitchen-diner for a couple's newly extended home

Words: **Rachel Ogden**

The client

Milissa Sorenson, a district nurse, and her partner, Ed Drake, a civil servant, both 25, live with their pug Pepper in a semi-detached house near Cardiff. The couple inherited the property three years ago and have since been saving up to turn it into their dream home, complete with an extension. However, they would like help with the layout of the new space, especially the kitchen.

The space

The new extension will wrap around the rear of the house, continuing out by 2.5m, while the existing wall separating the current kitchen and dining room will be knocked down. This will create a space that's approx 6m-deep x 6.7m-wide with a ceiling height of 2.4m.

THE WISHLIST

- 1 The couple are adding a 2.5m rear extension to create an open-plan kitchen-diner. They're keen to optimise storage space and include an island with seating and a pantry, although this can be placed in the utility or be a larder-style cupboard. In the dining area, they'd like a table, sofa and TV. A door in the utility will lead to a bathroom. They would like this to be a secret design that blends in.
- 2 In terms of style, Milissa and Ed would like a modern Shaker-style kitchen in warm neutral tones, such as mushroom, taupe, grey or sage, with black accents. It should be a calm, homely space, with no clutter on show. Milissa would love to incorporate texture and warm tones somewhere, perhaps using panelling or brick slips. Designers should avoid bold colours and prints, wood flooring and glossy finishes.
- 3 Their wishlist includes quartz worktops, a herringbone-pattern splashback, gas hob, Belfast sink and a 'breakfast cupboard' for the kettle, toaster, coffee machine and microwave. Ed's one wish is to have a small wine fridge. This could also be put in the utility if there's no room in the kitchen.
- 4 They would also like pendant lighting above the island and to include barstools, plus are open to the island being in a different shade to the rest of the kitchen to help it stand out.

THE MOODBOARD



Olson Wishbone-inspired barstool in black, £189, Where Saints Go. wheresaintsgo.co.uk



Architect single-lever 3-in-1 boiling-water tap in black, £649, Wödär. wodar.com

Casa Rich crick slip-effect tiles, £39.95 per sq m, Walls and Floors. wallsandfloors.co.uk



Vicenza Kode VK01 Nebbia worktops from the Pietra Kode collection, from £450 per sq m, Dekton. cosentino.com

October Mist, Morning Dew, Natural Linen, Venetian Portico interior eggshell paint, £37 for 0.94 litres, Benjamin Moore. benjaminmoorepaint.co.uk



25cm Hive handle in black, £26.99, Dowsing & Reynolds. dowsingandreynolds.com



THE BUDGET
£30,000, excluding installation >



MEET THE DESIGNER

Owner of Sheraton Interiors
Shehryar Khan has been designing kitchens for more than 20 years. His recent achievements include 2022 Kitchen Designer of the Year winner (up to £30k) and 2023 Kitchen Designer of the Year finalist (over £50k), both in the KBB Review Awards

NEED TO KNOW

SOURCEBOOK

Design and furniture Sheraton Interiors
sheratoninteriors.co.uk

Worksurfaces Silestone cosentino.com

Appliances Blanco blanco.com;

Quooker quooker.co.uk; Siemens

siemens-home.bsh-group.com

SOLUTION *two*

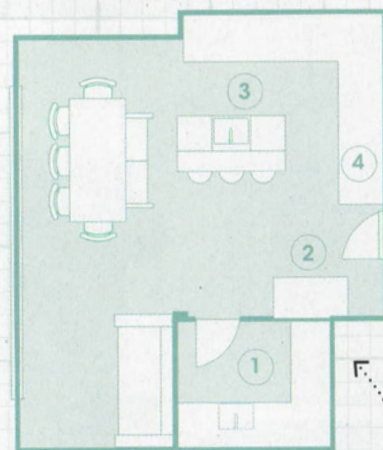
“I was thrilled to be given the opportunity to work on Milissa and Ed’s kitchen. They wanted a calming and neutral look that incorporated modern elements. To achieve this, I chose a neutral palette from the Thistleton range of the Sheraton classic collection, which features a modern smooth painted Shaker-style door. I’ve opted to paint the cabinetry in Farrow & Ball’s Cornforth White, with the island in Mizzle to add a pop of colour. Silestone Et Bella quartz work surfaces add an elegant and warm touch, while complementing the painted cabinetry and herringbone-style tiled splashback.

To increase convenience and optimise the use of space, appliances and features have been integrated where possible. The kitchen includes an integrated fridge-freezer, tall oven housing unit, and a multi-functional 3-in-1 Quooker Flex boiling-tap on the island. The pantry larder includes three drawers, spice racks, shelves, and a worktop. Brick slips along the back wall add warmth to the kitchen and continue into the living area.

Glass-fronted wall units can be used to display personal items thanks to internal lighting that will also add a warm glow in the evenings. I’ve suggested moving the entrance door to the utility – this not only helps free up wall space, it makes room for a sit-on bi-fold dresser unit at one end of the kitchen that doubles as a bar. This is where I placed Ed’s wishlist wine storage unit, so it’s easily accessible from the living and dining areas.

The utility itself has a double door hidden entrance into the bathroom as well as an undermounted sink, quartz worktops, and a built-in washer/dryer, along with a floating shelf and a herringbone splashback design.

This is a tranquil space with modern elements and ample storage, ideal for daily use and entertaining. I’m sure Milissa and Ed will enjoy their new kitchen for years to come.”



The PLANS

1 Utility room A pair of doors appear to be a large larder cupboard, yet one leads to the bathroom while the other conceals storage.

2 Storage solution At the centre of the L-shaped cabinetry, a slim pull-out solution maximises space, while above there’s an open wine rack.

3 Cooking Below the gas hob, there are four deep drawers that are ideal for storing pans and cookware.

4 Pantry larder Internal LED strips down either side illuminate the contents when the doors are opened.

THE COSTS

Furniture	£19,708.91
Worksurfaces	£3,300
Appliances	£5,471.06

TOTAL £28,479.97



Melissa's VERDICT:

“Overall, we like the design of this kitchen. The style of the cabinetry is perfect, and we love the neutral shade and glass cabinets, although the tone of green on the island is not for us. There is plenty of storage with a pantry-style cupboard and Shehryar has made clever use of the space opposite the main kitchen in the form of a bar – Ed particularly likes this element of the design. The Quooker tap is an added luxury – we are not sure if we would need a 3-in-1 design but it could be very convenient.

We both like the look of the brick slips and how this is followed through different areas of the space, as well as the herringbone tile layout and how this is echoed in the utility room. The ‘hidden’ bathroom entrance is really clever and I love the idea. That said, the utility room feels a bit smaller with this particular layout and we would choose not to have a sink here to maximise storage space. This design has definitely given us lots to think about and consider.” **KBB**