

KITCHENS BEDROOMS & BATHROOMS

BRITAIN'S
BEST-SELLING
KITCHEN,
BEDROOM AND
BATHROOM
MAGAZINE

JUNE 2021
£4.99

THE LIVE SUSTAINABLY

issue

Kitchens that are
kind to the planet

- + LOW-ENERGY appliances
- + RECLAIMED designs
- + WORKTOPS that reduce waste
- + IDEAS for better heating & lighting

How to
**RENOVATE
A BUNGALOW**

*How much water
do you use?*
Ways to cut your
bills in the bathroom

**AMAZING REAL
RENOVATIONS**
to inspire your
new look

PLUS
112
easy eco
updates to
shop now

TAYLISTmedia



thesethreerooms.com





SOLUTION *two*

“**T**he main issue in this room is that the space is disjointed. As it was important for Sharon to be able to sit in the kitchen and look out onto the garden, I’ve suggested moving the WC into a utility room to allow the table and sofa to be in the area where the full view of the outdoors can be appreciated. The washing machine and water tank would be relocated to the new utility room as well which I’ve taken into account in the couple’s budget.

“This reorganisation allows for space in front of the window for bench-style seating and a large dining area and means the existing dining room can be turned into a home office without any loss of socialising space. Across from the table, I’ve created a sofa area with a log burner to give the room some warmth and offer an eye-catching feature. The window looking out onto the garden has also been made larger, although there’s still space for a TV on the wall that can be viewed from the kitchen, sofa, and dining table areas.

“Sharon liked the idea of integrating a pantry into the design, so I’ve made this a standalone

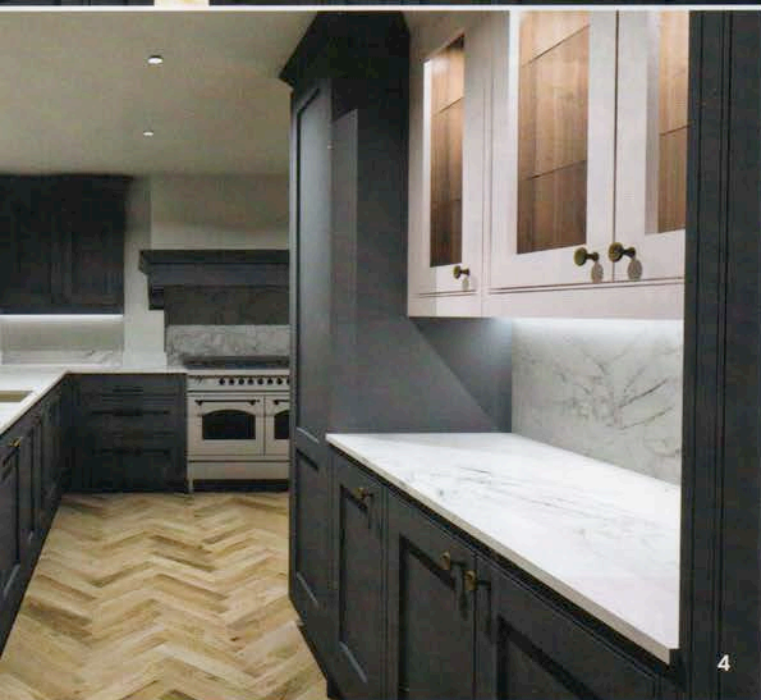
feature. It’s painted in Cinder Rose to bring some softness and contrast into the kitchen – the rest of which, apart from a display cabinet, is painted in Railings, both from Farrow & Ball. To create a lot of worktop space, I’ve created an L-shaped layout with a range cooker positioned along the wall, which also brings back the identity of the original features of the house. The full-height fridge and matching freezer sit opposite the cooking area and the coffee machine has been placed inside the pantry. The sink and boiling-water tap are then both in brass.

“I decided to use light veined Bergen Dekton worktops instead of slate. Sharon liked the idea of dark cabinetry, but I felt pairing this with a slate work surface would close in the space and look too overbearing. Using a light worktop instead really brightens up the scheme and helps to reflect the light coming into the room. The work surface continues as a splashback behind the range and below the display cupboards. I’ve finished the design with light wood herringbone flooring and plenty of overhead spotlights to ensure that the room is well illuminated.”



MEET THE DESIGNER

Marzia Caldirola works as a senior designer at Sheraton Interiors. After graduating as an interior architect from the Polytechnic University in Milan, she worked for kitchen brands in Italy and the UK. She has been designing kitchens for more than 25 years.



1 Display cupboards Internal LEDs turn a glass-fronted unit into a feature. **2 Peninsula** A raised section helps to conceal the sink area from the rest of the room. **3 Cooking zone** A sleek range cooker sits where the log burner was originally located and has a mantelpiece above it. **4 Heating** A new log burner solves the couple's issue of the open-plan space feeling cold.

The PLANS

1 Extraction An integrated Westin hood whisks away steam and smells from the range cooker. **2 Storage** A combination of tall pull-outs, ladders with internal drawers and a Le Mans unit in a corner ensure that cabinet contents are easily accessible. **3 Built-in bin** The end of the peninsula contains a pull-out bin, which is close to the sink. **4 Drawers** Pull-out storage either side of the range is ideal for pans and other cookware.



NEED TO KNOW

SOURCEBOOK

Design and furniture Sheraton Interiors
020 8894 5650 sheratoninteriors.co.uk

Worktops Dekton cosentino.com/en-gb

Appliances Rangemaster 01926 457628
rangemaster.co.uk; Westin 01484 421585
westin.co.uk

Sink The 1810 Company 01978 660770
the1810company.co.uk

Tap Quooker 020 7923 3355 quooker.co.uk

THE COSTS

Furniture	£36,286.80
Worktops and splashbacks	£6776.40
Appliances, sink and tap	£6565.80
Total	£49,629

THE VERDICT

Sharon says: "Gareth and I had never considered moving the whole kitchen to the right of the room. I love the idea of relocating the downstairs WC and combining it into a utility room on the left. The design has also given me a longed-for larder cupboard and I love the Cinder Rose colour.

"The layout makes good use of the existing space, incorporating a range cooker into the chimneybreast, but as Gareth has mobility problems it would be difficult for him to use. We have reservations about upright storage and the fixed seating again, but this layout does give us the desired log burner and larger windows, providing more of a garden view along with the location of the sofa. This will please both us and our dog, who will be happy and cosy." KBS